



WESTCYCLE INCORPORATED
ANNUAL REPORT 2015/2016

CONTENTS

ABOUT US	3
MEMBER ORGANISATIONS	4
SPONSORS & PARTNERS	5
CHAIRMAN'S MESSAGE	6
CEO'S MESSAGE	8
KEY ACTIVITIES	10
FINANCIAL STATEMENTS	29
AUDIT REPORT	30



ABOUT US

WestCycle is the peak body for cycling in Western Australia.

We embrace all elements of cycling. We are for long rides and short rides. For riding to work, riding to school, weekend rides, racing, bunch rides, BMX rides, riding at the track, hitting the trails and for quick spins around the block.

We are the industry representative body for cycling to Government.

We operate at a strategic level by leading and coordinating the growth and development of cycling in Western Australia. We do this by creating and implementing strategies that will position Western Australian cycling for future success.

We work behind the scenes to build the capacity of our cycling organisations.

We advocate and campaign to Government on a range of cycling related issues, including road safety.

We are also responsible for the distribution of grant funding received from the Department of Sport and Recreation for cycling initiatives.

Our membership comprises of cycling organisations, groups and clubs.

We are a non-profit organisation incorporated under the Western Australian Associations Incorporation Act 2015.

We are governed by an independent Board of Directors.



MEMBER ORGANISATIONS

FULL MEMBERS



AFFILIATE MEMBERS



MEMBERS LISTING IS CURRENT AS AT 1 NOVEMBER 2016

SPONSORS & PARTNERS

PRINCIPAL PARTNER & SPONSOR



Government of Western Australia
Department of Sport and Recreation

PROGRAM PARTNERS



Department of
Parks and Wildlife



Department of
Transport



GOVERNMENT OF
WESTERN AUSTRALIA



WestCycle thanks the generous support of our Government sponsors and program partners.

CHAIRMAN'S MESSAGE

Five years have passed since the formation of WestCycle as the State's Peak Cycling Body charged with coordinating the competitive, recreational, transport and advocacy elements of cycling across Western Australia.

The 2016 financial year has seen significant achievements including:

- Implementation of year 1 objectives of the WA State-wide Mountain Bike Strategy
- Completion of the WA Cycling Facilities Plan following 18 months of research and community consultation
- Successful delivery of Bike Week two years running and WestCycle's reappointment to deliver Bike Week for the next three years
- Creation of WA State-wide High Performance Strategy for cyclists across the disciplines
- Recognition as the Peak Advocacy Body for all elements of cycling across Western Australia including transport, recreation and competition
- Expansion to 34 member organisations and growing
- Development of key relationships across all facets of WA Government including the Transport Portfolio, Parks and Wildlife Portfolio, Police Portfolio, Road Safety Commission and Tourism
- Implementation of Australian Sports Commission Corporate Governance principles across our member organisations
- Strengthening of CycleSport Western Australia and development of an advanced Racing Calendar for 2016/2017
- Provision of expert advice to the WA State Government and facilitation of consultation to provide input on the "Perth @ 3.5m State Transport Plan"
- Continued implementation of shared services model across WestCycle and our member organisations.

WestCycle, in partnership with its member organisations and the cycling community, is responsible for the lead advocacy role to help achieve the Targets within "Our Bike Path - the Strategic Framework for Cycling in Western Australia from 2014 to 2020". We are the recognised voice of Western Australian cyclists to the WA State Government and have facilitated consistent messaging to the public, media and community on cycling matters. WestCycle, including its Board and Staff, have built a strong relationship with the Ministers and Senior Staff of the Departments of Sport and Recreation, Parks and Wildlife, Transport, Tourism, Police, Road Safety and the Premiers' Office together with community organisations and the media. Going forward we will continue to grow and provide a stronger voice on behalf of all cyclists, actively promoting their needs and seeking to improve safety.

We continue to believe that no-one has a monopoly on cycling in WA and that the only way cycling can create a healthier and more active Western Australia is through a unified partnership with all our member organisations and the community at large. We are fortunate to have a very experienced Board of Professional Directors who are all active cyclists and experience first-hand the needs of cyclists.

We are thankful to the State for its continued financial support to cycling during difficult economic conditions and we acknowledge that many of our member organisations are under considerable financial strain. As the custodian of taxpayer funds we are required to allocate OSP and Grant Funding in the

CHAIRMAN'S MESSAGE (CONTINUED)

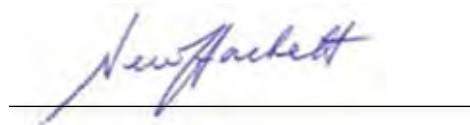
manner which we believe will best achieve the goals outlined within “Our Bike Path 2014 – 2020”. We deliberate carefully and spend many hours debating the financial allocations, and whilst we acknowledge the allocations may not please everyone, they are done in an independent and professional manner taking into account the needs of all our member organisations. To that end WestCycle is seeking to take advantage of new funding opportunities and commercial partnerships which will enable cycling to grow at every level.

During financial year 2016 not all cycling organisations were able to display the corporate governance disciplines commensurate with the receipt of WA taxpayer funds and as a consequence some organisations have ceased to exist and their functions have been rolled into the responsibility of WestCycle.

In October 2015 the WA Auditor General Report into Cycling in WA was issued again highlighting the challenges facing cycling in WA in relation to infrastructure and safety. We are actively working with the WA Government to address these challenges and will shortly issue new Codes of Conduct for Cycling in WA, developed with feedback from our member organisations. WestCycle will also oversee a new State-wide cycling safety campaign in conjunction with the Road Safety Commission commencing early 2017.

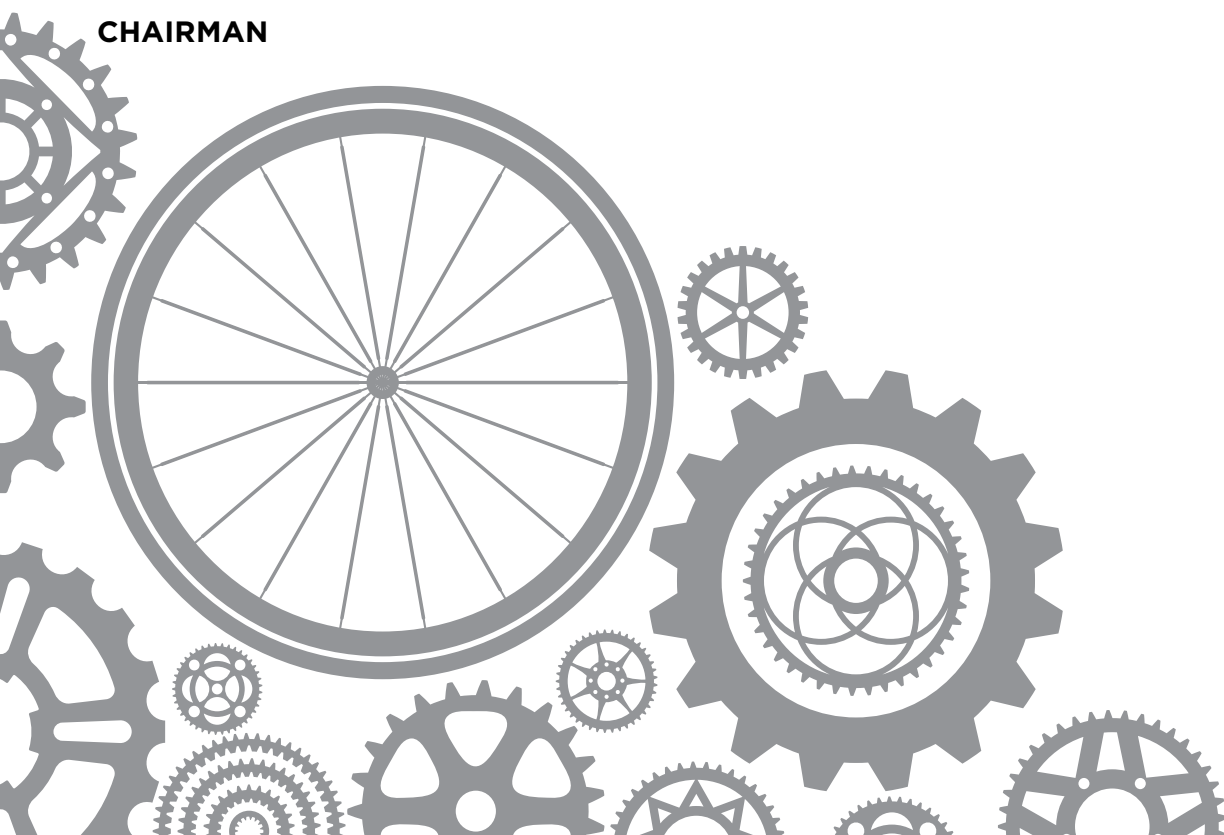
Again I would like to express my sincere thanks to our members, my fellow WestCycle Directors, our tireless and energetic CEO, all our dedicated WestCycle staff, and the Department of Sport and Recreation Minister Mia Davies, Director General Ron Alexander and senior DSR Staff who have all provided significant support and guidance throughout the year.

Thank you



NEIL HACKETT

CHAIRMAN



CEO MESSAGE

WestCycle's Vision is for 'Western Australia to have a thriving cycling community that is inclusive and cohesive'. As I reflect back upon 2015-16 I'm proud of the achievements that the cycling community have delivered which will help realise this vision. Riding a bike is becoming more and more engrained in the fabric of Western Australian society and with the momentum we have as a collective group this will only continue to grow.

WestCycle had a strong year as a result of many stakeholders being aligned in their vision and support. At the core of this is the team within WestCycle who not only have significant expertise in their areas of responsibility but a passion and vision for cycling that is unrivalled. No one will ever truly realise the hours they put in to making cycling in the community better, it can often be a thankless job and I can not show enough gratitude to the team we have in place for everything they selflessly do for the community.

Our Bike Path remains our guiding document guiding us on a daily basis. We are making inroads into many areas, some may not be visible as a lot of work goes on behind the scenes unnoticed well in advance of public visibility, whilst others are more prominent. I can confidently say that of the 8 key targets within Our Bike Path we have put considerable energy against moving towards our 2020 targets.

Looking across all disciplines and Members it is hard to argue that cycling isn't continuing to strengthen. A tough economic climate is often used as a fall back when things aren't going well but I truly believe that cycling is set to prosper whatever the economic climate and you could actually argue that as the economy takes time to rebound we will prosper further as people chose to holiday and adventure locally, enter local events and use the bike more often as a form of transport. All of WestCycle's full Member organisations have realised increases in Membership over the last 12 months. It is difficult to attract sponsorship and investment in the current climate and with this in mind I urge everyone to unite and innovate. Of all the people that cycle in Western Australia on a regular basis only 1% - 2% are a member of any cycling organisation. There are still 98% of people that are missing out on the benefits of being Members. As a collective we have a huge opportunity to work together on this.

Over the last year we have welcomed five new member organisations; Cockburn Bicycle User Group; Cycle Touring Association of Western Australia, Triathlon Western Australia, Cycling Development Foundation and Bike Valet. I look forward to working with all our members in the next twelve months to find more ways that we can add value and assist our Members.

I would like to make special mention of the Department of Sport and Recreation who continue to support cycling through WestCycle. Not only does the Department support us financially but we get considerable support through training, guidance and advice. There are many people within the Department that I would like to thank but a special mention must go to Senior Consultant Jacqui Jashari. Jacqui spends a considerable amount of time supporting WestCycle and our Members.

Mountain biking continues to prosper and I would like to thank Louise Fox (nee Wallace), who recently stepped down from her position of President on the Committee of WAMBA. Louise has contributed a great deal to mountain biking and helped guide the organisation successfully. I also welcome new President Alex Wade, who is immediately making a significant impact in uniting the mountain biking community behind a vision.

CEO MESSAGE (CONTINUED)

The strength of BMX in Western Australia is evident and is due to the efforts of CEO Tania Wehr, previous President Matt Butterworth and the entire Board. I look forward to working closely with both Tania and incoming President Warren Edwardes over the next year to find ways that we can collectively contribute to BMX in Western Australia.

Road and Track cycling continues it's positive momentum, with Sam Welsford winning a Silver Medal on the track during the 2016 Rio Olympic Games. The Board of CycleSportWA is focused on continual growth and special mention must go to Chairman Daniel O'Donoghue who has continued contributing countless hours of his personal time to the sport.

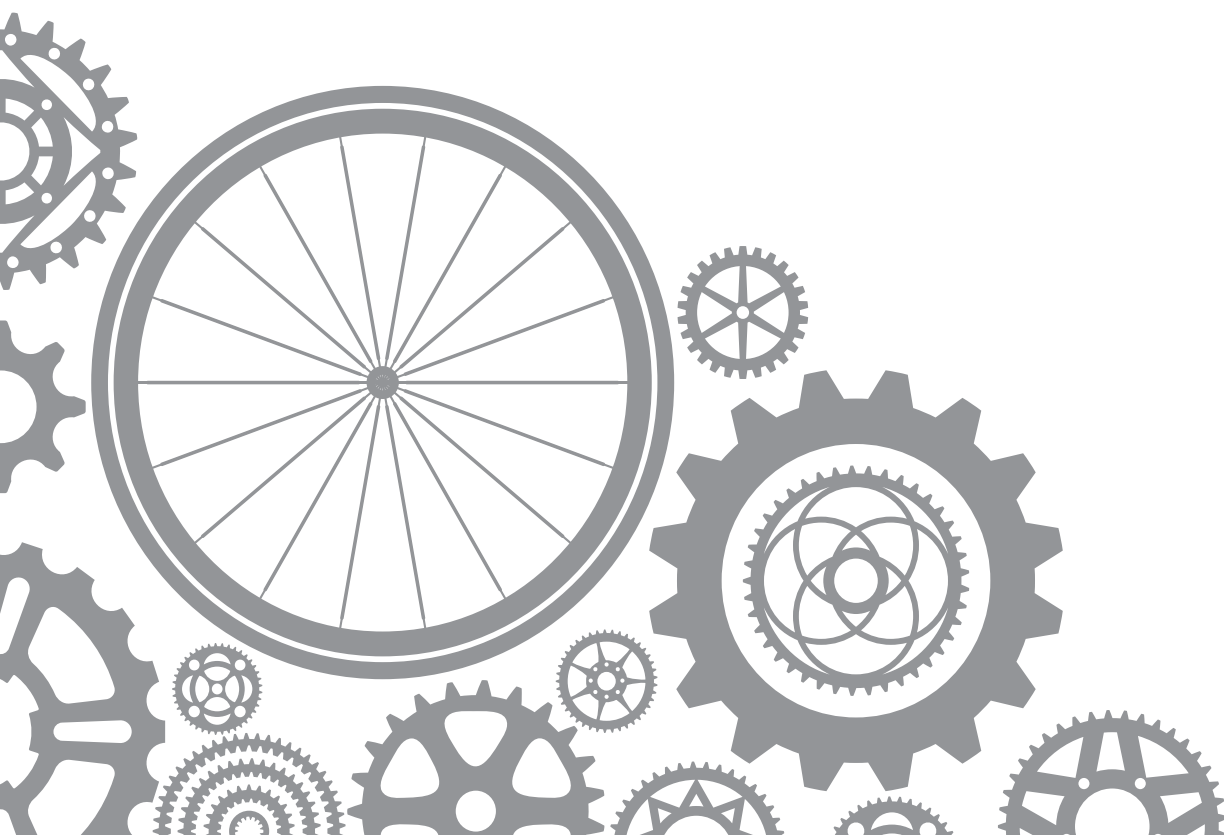
David Hutson, President of Bicycling Western Australia, the entire Board and Jeremey Murray, CEO continue to focus on bringing value to their members and giving them a voice. Events such as the Dam's Challenge are integral to the cycling calendar each year and I look forward to continuing to find ways we can work together to benefit all bike riders.

Finally and most importantly, thank goes to all our member organisations, cycling clubs, bicycle user groups, coaches, officials, advocates and volunteers that continue to drive the development of cycling at every level in Western Australia. Cycling would not have the profile and participation levels it has today without your passion and involvement.



MATT FULTON

CHIEF EXECUTIVE OFFICER



KEY ACTIVITIES

OUR BIKE PATH: A STRATEGIC FRAMEWORK FOR CYCLING IN WESTERN AUSTRALIA

'Our Bike Path: A Strategic Framework for Cycling in Western Australia' continues to guide WestCycle on a daily basis. The document forms our guiding principle on everything from how money is distributed to Members through to our priorities and focuses. The plan is not about any one cycling organisation, discipline or Government agency. It's a plan for all forms of cycling and for everyone associated with developing and supporting bike riding in Western Australia: our clubs, cycling groups, local councils, Government agencies, volunteers, administrators and riders.



THERE ARE EIGHT TARGETS WITHIN OUR BIKE PATH:

1. PARTICIPATION

To get over 1 million Western Australians regularly riding by 2020

2. TRANSPORT

For cycling to achieve a transport mode share of 5% by 2020

3. FEMALE PARTICIPATION

To reduce the disparity between men's and women's participation in cycling

4. CHILDREN'S PARTICIPATION

To move the % of kids riding to school closer to the levels of the 1970's

5. SAFETY

To reduce the number of serious bicycle injuries every year

6. IMAGE

To dramatically improve community perceptions of cycling as a safe and enjoyable activity

7. INFRASTRUCTURE

To increase the number of cycling infrastructure facilities in metropolitan and regional WA (includes cycle paths, mountain bike trails and cycle sport facilities) every year.

8. SPORTING SUCCESS

To increase the number of Western Australian cyclists winning gold at national championships

1. PARTICIPATION

CYCLING PARTICIPATION GROWS

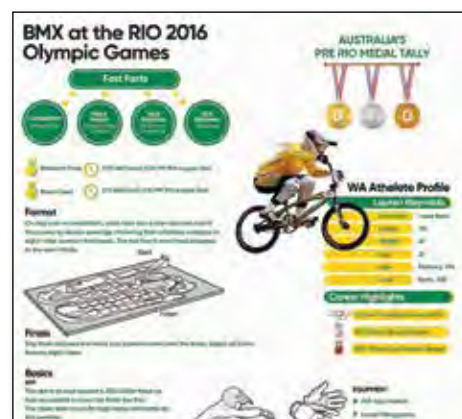
Over half a million people in Western Australia ride a bike each week, a 46% increase since 2013. This makes Western Australia number one State in Australia in terms of participation per capita. The target of doubling this figure to 1 million by 2020 is a tough ask, but achievable if state and Local Governments and the cycling community continue to work together to support and grow cycling, promote the benefits of riding and transform our streets, roads and local communities into places where people aren't afraid to ride.

OLYMPIC CAMPAIGN

In the build up to the Rio Olympic Games we ran a social media campaign that focused on increasing participation in Olympic cycling events – road, track, cross country mountain biking and BMX. The campaign explained the rules of each event, showcased Western Australian athletes like Melissa Hoskins and Lauren Reynolds and encouraged people to get involved and join their local club.

BIKE WEEK

Bike Week 2016 reached over 12,000 Western Australians, with over 100 events held across the State from Albany to Broome. Event organisers worked hard to maximise participation and encourage people of all ages, abilities and interests to take part. The event line-up was the most diverse yet: old favourites like social rides, treasure hunts and community breakfasts featured prominently, but exhibitions, a week-long lecture series were also introduced. WestCycle hosted our own Bike Week celebrations for the first time – the Bike Week Opening Party, which extended invitations to people actively involved in growing bike riding in Western Australia, and the Politicians' Breakfast Ride which saw State and Local politicians riding with WestCycle staff and board as well as our Members and other key stakeholders.

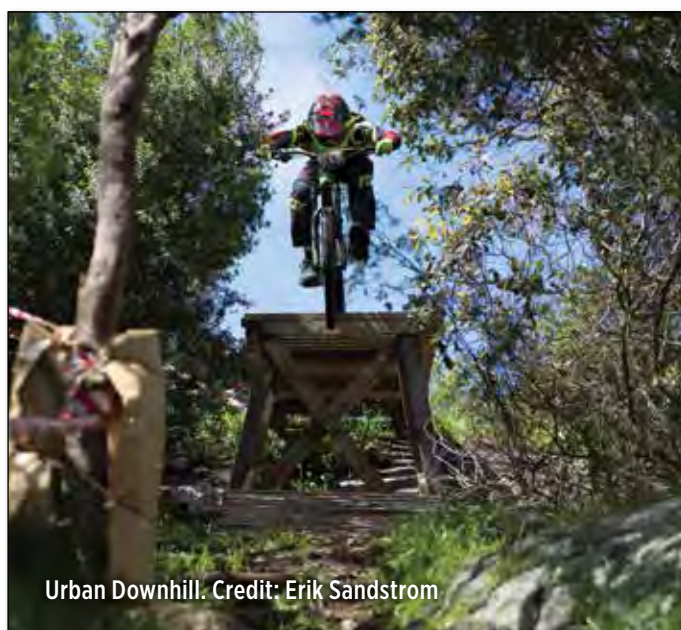


Credit: Giro'd Perth

1. PARTICIPATION (CONTINUED)

GROWING ICONIC EVENTS

We continue to provide staff support and financial assistance to grow participation at some of Western Australia's iconic events, including the Albany Urban Downhill, UCI Gran Fondo World Series, Cape to Cape MTB and the Tour of Margaret River.



MOUNTAIN BIKE PARTICIPATION

Driven by the Western Australian Mountain Bike Strategy, our mountain bike staff worked with the West Australian Mountain Bike Association, clubs, event organisers and schools to increase the number of people involved in mountain biking. This included: 7 introduction to mountain biking programs, 9 school mountain bike taster sessions and the provision of grant assistance to secure 30 new accredited coaches. The number of people taking part in mountain bike events continues to grow, with 480 people participating in a mountain bike race for the first time over the 2015/16 season.



2. TRANSPORT

CYCLING FUNCTIONAL REVIEW

Over the last year, the State Government has conducted a functional review of cycling across the Transport Portfolio.

We are pleased that the review formally recognises WestCycle as representative of the cycling community with future membership of the transport portfolio's Implementation Reference Group secured. We look forward to continuing to working with the Department of Transport, Main Roads WA, Public Transport Authority and other group members to develop transport cycling.

BIKE WEEK 2016

Building on the success of last year, we partnered again with the Department of Transport to deliver Bike Week 2016. Over 100 events took place during the week and with more regional events than ever before, Bike Week 2016 delivered the bikes for transport message right across Western Australia.

Many of these events were made possible by the Department of Transport's highly-oversubscribed competitive grants program. WestCycle managed the grants program on the Department's behalf and awarded \$30,000 to community organisations, cycling groups and Local Governments.

Our promotion and marketing in the lead up and during Bike Week 2016 was strong, building on our work last year designing the Bike Week brand, developing the website and establishing social media channels.

We are delighted to have been awarded the contract to manage Bike Week again in 2017 and 2018.



Canning River Ramble



Credit: Giro'd Perth

2. TRANSPORT (CONTINUED)

RIDE2WORK DAY

Ride2Work Day is an annual national event that celebrates, promotes and encourages commuting by bike. At state level, the event is run by Bicycling Western Australia. The 2015 event was held at the Perth Concert Hall with a free breakfast provided to several thousand riders. Stalls, exhibitions, information booths and live music added to the festival atmosphere.

LESSONS FROM THE NETHERLANDS

We continue to look internationally for innovative approaches to cycling infrastructure and ways to create bike-friendly communities. Our Community Engagement Manager, Sarah Smith, combined a trip to Europe with a study visit to Rotterdam in The Netherlands. She explored the city by bike and gained an understanding how infrastructure makes cycling the easy choice, finding the Dutch approach to safely and conveniently incorporating cycling into intersections and roundabouts particularly enlightening. On her return she presented her learnings to the cycling and behavioural change teams at the Department of Transport and continues to apply these in her role.



3. FEMALE PARTICIPATION

WOMEN'S COMMISSION

WestCycle supports reducing disparities between female and male participation in all aspects of sport and recreational cycling. Recognising the need for equal opportunities and experiences for all female participants in road and track cycling, the Board of CycleSport Western Australia have identified the need for a Women's Commission. The Commission will be assembled in early 2017 following a call for nominations. It will then identify issues and opportunities relating to female racing and participation and make recommendations to the Board.

LADIES COME AND TRY XC RACING

One of the key aims of the Western Australian Mountain Bike Strategy is to increase female participation in mountain bike events. WestCycle's two dedicated mountain bike staff coordinated female-only race skills sessions before the XC State Rounds in Kalamunda and Margaret River, with over 30 female taking part. Feedback was excellent with the sessions giving many of the participants the confidence to give racing a go. Over the 2015/16 season, 55 females participated in a mountain bike race for the first time whilst approximately 20% of the race field for the 2016 Kalamunda XC State Round were women (compared to 13% in 2015).



WOMEN'S MOUNTAIN BIKING SHORT FILM

This year we were excited to drive the development of a short film that promotes women's mountain biking in Western Australia. Filmed in Margaret River and starring members of Margaret RivHer, a female riding group, the 1-minute film was funded by the Department of Sport and Recreation through funds received to roll out the Western Australian Mountain Bike Strategy. The film has been promoted through social media and has proven to be a valuable resource in our discussions to further funding and support from State and Local Governments and other stakeholders.



4. CHILDREN'S PARTICIPATION

BIKE SKILLS

For a number of years WestCycle has successfully run the Bike Skills Program, a program licensed under Cycling Australia's AustCycle Program. The future of AustCycle is unclear with Cycling Australia indicating that it will cease in the near future and thus removing the insurance, which underpins the program. This has forced us to make the difficult decision to discontinue the program from November 2016. Bike education is a critical component of Our Bike Path and we will be discussing this further with the State Government with the intention of establishing a program in the near future.



TAKE A KID MOUNTAIN BIKING DAY

As part of the Mountain Bike State Strategy Implementation Grant from the Department of Sport and Recreation we provided Clubs with a toolkit to run their own "Take a Kid Mountain Biking Day", this is an initiative that will be expanded in future years.



KIDS' MOUNTAIN BIKING SHORT FILM

As part of the series of short films produced with the Mountain Bike Implementation Plan Grant from the Department of Sport and Recreation we developed a film specifically targeting increases in participation of children in mountain biking. The film positioned the activity as one that families could do together with the aim to further inspire people that mountain biking is a fun and safe activity.



5. SAFETY

GOVERNMENT RELATIONSHIPS

We continue to work with the State Government on cycling safety initiatives, meeting regularly with the Road Safety Commission and key Ministers and politicians. Measures like Minimum Passing Distance and bike education for children will continue to be key parts of the conversation in the lead up to the state election next year.

BIKE SAFETY SURVEY

In October 2015 we ran a Bike Safety Survey that asked the cycling community to identify the measures most needed to make it safer to ride a bike in Western Australia. Over 2,000 people responded and this has focused our efforts over the last year. Moving into 2016/17, we will be developing a Bike Safety Manifesto to formalise our key priorities and actions and enable us, and our members, to maximise both focus and resources.

BEST PRACTICE GUIDES

The Bike Safety Survey highlighted the desire of the cycling community for a statewide campaign to foster a culture of mutual respect between everyone sharing the road. Recognising this, we secured a grant from the Road Safety Commission to develop 'best practice guides', a series of guides to help make our paths, roads and communities safer places and ensure that cyclists and drivers get home safely. There are three guides in the series: one aimed at drivers, one for riding in a group and another for people riding on their own. A campaign to share the guides across the state will commence shortly.

TIM'S RIDE

WestCycle continues to support Tim's Ride with staff and board members riding the annual event in memory of Tim Anderson. The event aims to bring together all parts of the cycling community to improve cycling safety and we'll be working over the next year to help grow the event even further.



6. IMAGE

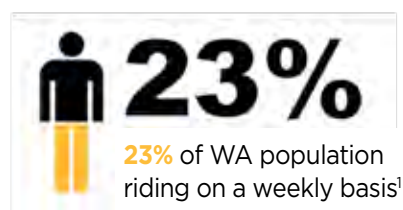
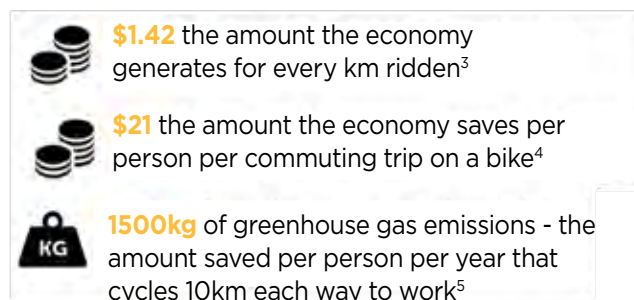
PROMOTING THE BENEFITS OF CYCLING

We continue to promote the economic, environmental, health, social and community benefits of cycling in everything we do. We draw on international and national research and are exploring ways to secure Western Australian-specific research to further support our promotion of cycling.

CHANGING MOUNTAIN BIKE PERCEPTIONS

It is vital that key stakeholders such as Tourism WA understand the breadth of mountain biking so we can successfully promote Western Australia as a mountain biking destination and draw local, interstate and international riders. We've been working hard to change perceptions of mountain biking from an extreme, adrenaline-fuelled sport to an inclusive activity that anyone can enjoy and will continue to promote this message.

WHAT CYCLING MEANS TO WESTERN AUSTRALIA



7. INFRASTRUCTURE

BIKE BOULEVARDS

The State Government's 'Safe Active Streets' Bike Boulevard program is an innovative approach to cycling infrastructure. We've been part of the process since its conception at a Cycling Imagineering Workshop and a Ministerial Roundtable Dinner in 2015 and have fed into the design of the pilot projects in Vincent, Belmont and Bayswater. Bike Boulevards are designed to create safer environments with priority given to cyclists over drivers and easy, connected links to local destinations or major bike routes. We look forward to continuing to work with state and Local Governments to spread the Bike Boulevard concept.



Credit: Department of Transport

SOUTH WEST MOUNTAIN BIKE MASTER PLAN

Following the launch of the South West Mountain Bike Master Plan, we have been working closely with the Department of Parks and Wildlife and the South West Development Commission to prepare a business case to support a Royalties for Regions funding application to develop nationally significant mountain bike locations in Margaret River, Pemberton and Collie/Wellington. This has included securing support from Ministers, Local Governments, Tourism WA, local communities, Chambers of Commerce and local mountain bike clubs.

PERTH AND PEEL MOUNTAIN BIKE MASTER PLAN

Development of the Perth and Peel Mountain Bike Master Plan is well underway, with a draft to be released for public comment towards the end of 2016. The master plan has been developed with landowners, land managers, the mountain bike community and other key stakeholders across the two regions and will identify, assess and prioritise locations mountain bike development could happen.

WESTERN AUSTRALIAN BICYCLE NETWORK PLAN

We've continued to represent the cycling community on the Department of Transport's Western Australian Bicycle Network Plan Implementation Reference Group. We meet regularly with the Department of Transport, Main Roads WA and the Public Transport Authority, providing comment and input on the expansion of the bike network, including the Principal Shared Pathway (PSP) network.



7. INFRASTRUCTURE (CONTINUED)

We also form a key part of the Perth Bicycle Network and the Regional Bicycle Network grant assessment panels, reviewing and determining applications for cycling infrastructure development from Local Governments across the state.

LOCAL GOVERNMENTS

The appointment of a Community Engagement Manager in late 2015 has extended our capacity to work closely with Local Governments in their development of strategies, policies and cycling infrastructure. Our work includes: feeding into the development of bike plans, providing comment on local planning strategies and plans, and providing specialist knowledge and sound expertise.

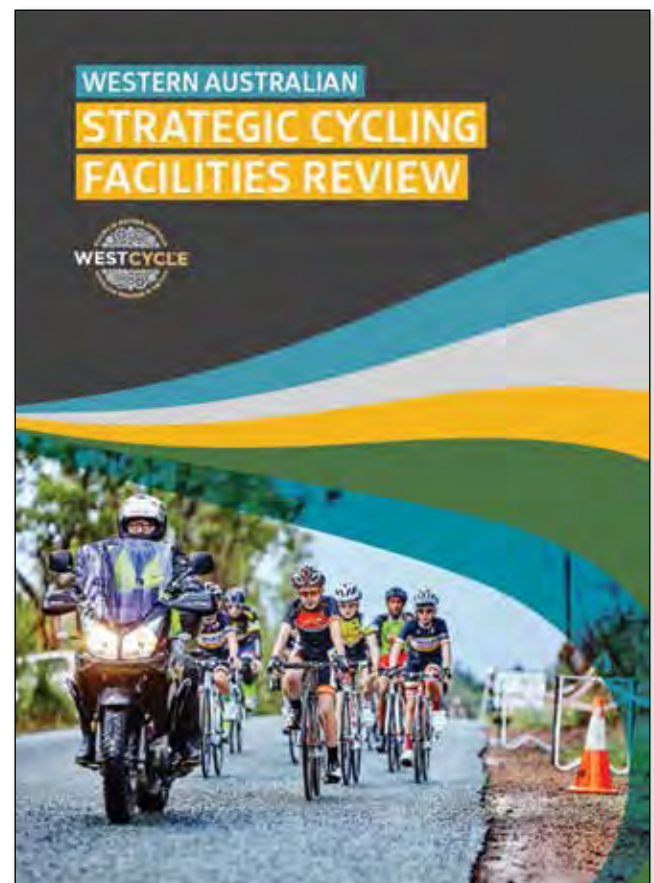
We also represent the cycling community on a number of Local Government community panels and project stakeholder groups.

WESTERN AUSTRALIAN CYCLING FACILITIES STRATEGIC REVIEW

Cycling infrastructure development in Western Australia to date has largely focused on bikes as transport and there has been limited dedicated facility provision for sport and recreation riding.

This lack of provision stems from the misconception that sport and recreation cycling, unlike other activities, has no requirement for dedicated facilities. On the contrary, access to safe and sustainable dedicated facilities can yield significant benefits to riders at every stage of every cycling pathway, from local grass-roots to state, national and international level.

WestCycle are finalising the Western Australia Cycling Facilities Strategic Review, which has been funded by the Department of Sport and Recreation. The review establishes a high level understanding of current provision and need for dedicated facilities for all disciplines in Western Australia. We look forward to working with the Department of Sport and Recreation, Local Government and our Members to continue the momentum and secure facilities.



8. SPORTING SUCCESS

HIGH PERFORMANCE MANAGER

Recognising the importance of a strong and supportive high performance environment to sporting success, we have created a new High Performance Manager position to oversee high performance in all competitive cycling discipline. Key deliverables in this role include: managing the junior and senior state squads and state teams for road, track and mountain biking, working closely with BMX Sports WA, monitoring athlete pathways, and strengthening relationships with key partners such as the Western Australia Institute of Sport (WAIS), high performance coaches, cycling clubs and the Department of Sport and Recreation.

WESTERN AUSTRALIAN HIGH PERFORMANCE PLAN

Our development of the Western Australian High Performance Plan is nearing conclusion with the plan set for release in late 2016. Funded by the Department of Sport and Recreation, this plan will help shape the successful future of high performance cycling across all disciplines.

The plan's role is to create high performance environments that support coaches, athletes and teams to perform at their best in state, national and international competition. It also seeks to identify Western Australia's next generation of athletes, providing the right support at the right time to ensure our athletes continue to achieve sporting success.

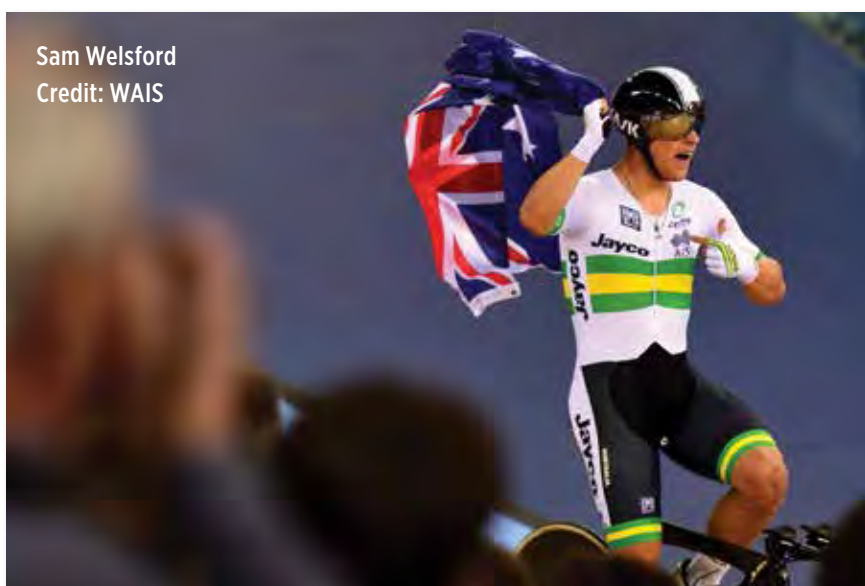
The plan includes an analysis of the current cycling environment across all disciplines followed by a future focus that will showcase key strategic outcomes as well as a description of resource allocation, operational objectives and key personnel required to create a sustainable high performance cycling environment.



SPORTING SUCCESSES

Western Australia has had a number of athletes perform and succeed at the pinnacle of their sports over the last year and as a state we certainly over deliver in this area.

The Western Australia Institute of Sport (WAIS) continues to support cycling with their programs, we thank Clay Worthington, Andrew Jackson and Teagan Wilkie.



INTERNATIONAL COMPETITIONS		
XXXI Olympic Games		
Event	XXXI Olympic Games	
Location	Rio De Janeiro, Brazil	
Date	5 - 21 August 2016	
Place	Who	Event
Silver	Sam Welsford	Track Men's Team Pursuit
11th	Lauren Reynolds	BMX Women's BMX
5th	Melissa Hoskins	Track Women's Team Pursuit
Track World Championships		
Event	Track World Championships	
Location	London, Great Britain	
Date	2 - 6 March 2016	
Place	Who	Event
1st	Sam Welsford	Men's Team Pursuit
BMX World Championships		
Event	BMX World Championships	
Location	Medellin, Colombia	
Date	25 - 29 May 2016	
Place	Who	Event
5th	Lauren Reynolds	Elite Women Time Trial
16th	Lauren Reynolds	Elite Women
Mountain Bike World Championships - XCO/XCE/XCR		
Event	Mountain Bike World Championships - XCO/XCE/XCR	
Location	Nove Mesto NA Morave, Czech Republic	
Date	28 June - 3 July 2016	
Place	Who	Event
60th	Reece Tucknott	U23 Men's Cross Country

SPORTING SUCCESSES (CONTINUED)

Event Junior Track World Championships		
Location	Aigle, Switzerland	
Date	20 – 24 July 2016	
Place	Who	Event
9th	Tahlay Christie	Women's Sprint
10th	Tahlay Christie	Women's Keirin
7th	Tahlay Christie	Women's Team Sprint
2nd	Tahlay Christie	Women's Individual Pursuit
7th	Tahlay Christie	Women's Team Pursuit
1st	Tahlay Christie	Women's Madison
Event 2016 Oceania Track Championships		
Location	Invercargill, New Zealand	
Date	8 – 11 October 2015	
Place	Who	Event
2nd	Sam Welsford	Men's Scratch Race
1st	Sam Welsford	Men's Omnium
2nd	Sam Welsford	Men's Madison
2nd	Kye Bonser	U19 Men's Sprint
2nd	Kye Bonser	U19 Men's Time Trial
3rd	Kye Bonser	U19 Men's Keirin
2nd	Kye Bonser	U19 Men's Team Sprint
1st	Tahlay Christie	U19 Women's Sprint
1st	Tahlay Christie	U19 Women's Time Trial
1st	Tahlay Christie	U19 Women's Keirin
2nd	Tahlay Christie	U19 Women's Team Sprint
2nd	Eliza Wundersitz	Open Women's Team Pursuit
Event Oceania Road Championships		
Location	Bendigo, Victoria	
Date	3 – 5 March 2016	
Place	Who	Event
3rd	Michael Storer	U23 Men's Time Trial
1st	Michael Storer	U23 Men's Road Race
Event Oceania Mountain Bike Championships		
Location	Queenstown, New Zealand	
Date	25 – 27 March 2016	
Place	Who	Event
3rd	Reece Tucknott	U23 Men's Cross Country

SPORTING SUCCESSES (CONTINUED)

NATIONAL COMPETITIONS		
Australian Road Championships		
Event		
Location	Buninyong, Victoria	
Date	6 - 10 January 2016	
Place	Who	Event
3rd	Ben O'Connor	U23 Men's Time Trial
2nd	Cameron Myer	Men's Road Race
3rd	Anthony Giacoppo	Men's Criterium
2nd	Sam Welsford	U23 Men's Criterium
Australian Para-Cycling Road National Championships		
Event		
Location	Edinburgh/Williamstown, South Australia	
Date	27 - 28 February 2016	
Place	Who	Event
1st	Nigel Barley	H4 Men's Time Trial
2nd	Nigel Barley	H4 Men's Road Race
1st	Andrew Bannister	T2 Men's Time Trial
1st	Andrew Bannister	T2 Men's Road Race
1st	Karen Harvey	H4 Women's Time Trail
1st	Karen Harvey	H4 Women's Road Race
Australian Junior Road Championships		
Event		
Location	Bendigo, Victoria	
Date	2 - 4 September 2016	
Place	Who	Event
1st	Thomas Cornish	U17 Men's Road Race
2nd	Darlia Haines	U15 Women's Road Race
3rd	Danica Wiggins	U15 Women's Road Race
1st	Darlia Haines	U15 Women's Criterium
Australia Masters Road Championships		
Event		
Location	Griffith, NSW	
Date	1 - 3 October 2016	
Place	Who	Event
3rd	Colin Rose	Men Category 5 Time Trial

SPORTING SUCCESSES (CONTINUED)

Australian Track Championships		
Event		
Location	Adelaide, South Australia	
Date	3 - 6 February 2016	
Place	Who	Event
1st	Tahlay Christie	U19 Women's Sprint
1st	Tahlay Christie	U19 Women's Time Trial
3rd	Matt Richardson	U19 Men's Keirin
1st	Tahlay Christie	U19 Women's Keirin
3rd	Jade Haines	U19 Women's Keirin
1st	Sam Welsford	Men's Individual Sprint
1st	Jade Haines	U19 Women's Individual Pursuit
3rd	Matt Richardson	U19 Men's Scratch Race
1st	Jade Haines	U19 Women's Scratch Race
2nd	Isabella King	Women's Point's Race
2nd	Kye Bosner/Matt Richardson/ Craig Wiggins	U19 Men's Team Sprint
3rd	Davina Summers/Jade Haines/ Niken Jeffereies/ Elissa Wundersitz	Women's Teams Pursuit
2016 Australian Omnium Track Championships		
Event		
Location	Adelaide, South Australia	
Date	16 - 17 December 2015	
Place	Who	Event
2nd	Sam Welsford	Men's Omnium
2nd	Elissa Wundersitz	Women's Omnium
2nd	Jade Haines	U19 Women's Omnium
Australian Junior Track Championships		
Event		
Location	Launceston, Tasmania	
Date	24 - 27 February 2016	
Place	Who	Event
2nd	Darlia Haines	U15 Women's Sprint
3rd	Rihana Pezaj	U17 Women's Time Trial
3rd	Darlia Haines	U15 Women's Time Trial
1st	Darlia Haines	U15 Women's Individual Pursuit
1st	Darlia Haines	U15 Women's Scratch Race
1st	Darlia Haines	U15 Women's Points Race
3rd	Julian Krohn	U17 Men's Points Race
3rd	Tyler Lindorff, Kieran Scott, Juliana Krohn, Luke Howe	U17 Men's Team Pursuit

SPORTING SUCCESSES (CONTINUED)

Event Australian Masters Track Championships		
Location	Melbourne, Victoria	
Date	30 March - 2 April 2016	
Place	Who	Event
3rd	Aaron Bonser	Men's Masters 1 Time Trial
2nd	John Dixon	Men's Masters 8 Time Trial
3rd	Brian Kennedy	Men's Masters 10 Time Trial
1st	Rebecca Wheadon	Women's Masters 2 Time Trial
2nd	Jennifer Sammons	Women's Masters 7 Time Trial
2nd	George Boron	Men's Masters 2 Sprint
3rd	John Dixon	Men's Masters 8 Sprint
3rd	Brian Kennedy	Men's Masters 10 Sprint
3rd	Lynee Munro / Rebecca Wheadon	Women's Team Sprint
2nd	Rebecca Wheadon	Women's Masters 2 Sprint
3rd	Brian Kennedy	Men's Masters 10 Individual Pursuit
2nd	Adelia Reyneke	Women's Masters 2 Individual Pursuit
1st	Jenifer Sammons	Women's Masters 7 Individual Pursuit
3rd	Aaron Bonser	Men's Masters 1 Scratch Race
Event Australian MTB Championships		
Location	Bright, Victoria	
Date	17 - 20 March 2016	
Place	Who	Event
3rd	Tony Tucknott	XCO Masters 5/6 Men
Event BMX Australia National Series 2016		
Location	Nerang, Cairns, Shepparton and Bathurst	
Date	January - March 2016	
Place	Who	Event
2nd	Corey Taylor	U14's Boys
1st	Championship Team	
3rd	Challenge Team	
3rd	Dynamite Team	
3rd	Crackerjack Team	





FINANCIAL STATEMENTS
FOR THE PERIOD 1 JULY 2015 TO 30 JUNE 2016
WESTCYCLE INCORPORATED
ABN: 35 563 134 343

CONTENTS

INDEPENDENT AUDIT REPORT	30
DIRECTOR'S REPORT	32
STATEMENT BY THE MEMBERS OF THE BOARD	36
INCOME & EXPENDITURE STATEMENT	37
ASSETS AND LIABILITIES STATEMENT	38
STATEMENT OF CHANGES IN EQUITY	39
STATEMENT OF CASH FLOWS	40
NOTES TO THE FINANCIAL STATEMENTS	41

AUDIT REPORT

Stantons International (KORSE and Certified) Pty Ltd

Incorporated in

Stantons International

Chartered Accountants and Consultants

PO Box 1906
West Perth WA 6872
Australia

Level 2, 1 Walker Avenue
West Perth WA 6005
Australia

Tel: +61 8 9481 3188

Fax: +61 8 9321 1204

ABN: 84 144 581 519

www.stantons.com.au

INDEPENDENT AUDITOR'S REPORT TO THE MEMBERS OF WESTCYCLE INCORPORATED

We have audited the accompanying financial report, being a special purpose financial report, of Westcycle Incorporated (the Association), which comprises the Assets and Liabilities Statement as at 30 June 2016, the Income and Expenditure Statement, Statement of Changes in Equity and Statement of Cash Flows for the year then ended, notes comprising a summary of significant accounting policies and other explanatory information, and the director's declaration.

Directors' Responsibility for the Financial Report

The directors of the association are responsible for the preparation of the financial report and have determined that the basis of preparation described in Note 1 to the financial report is appropriate to meet the requirements of the *Western Australian Associations Incorporation Act 1987* and is appropriate to meet the needs of the members. The directors' responsibility also includes such internal control as the directors determine is necessary to enable the preparation of a financial report that is free from material misstatement, whether due to fraud or error.

Auditor's Responsibility

Our responsibility is to express an opinion on the financial report based on our audit. We have conducted our audit in accordance with Australian Auditing Standards. Those standards require that we comply with relevant ethical requirements relating to audit engagements and plan and perform the audit to obtain reasonable assurance whether the financial report is free from material misstatement.

An audit involves performing procedures to obtain audit evidence about the amounts and disclosures in the financial report. The procedures selected depend on the auditor's judgement, including the assessment of the risks of material misstatement of the financial report, whether due to fraud or error. In making those risk assessments, the auditor considers internal control relevant to the association's preparation of the financial report that gives a true and fair view, in order to design audit procedures that are appropriate in the circumstances, but not for the purpose of expressing an opinion on the effectiveness of the association's internal control. An audit also includes evaluating the appropriateness of accounting policies used and the reasonableness of accounting estimates made by the committee, as well as evaluating the overall presentation of the financial report.

We believe that the audit evidence we have obtained is sufficient and appropriate to provide a basis for our audit opinion.

AUDIT REPORT (CONTINUED)

Stantons International

Opinion

In our opinion, the special purpose financial report presents fairly, in all material respects, the financial position of Westcycle Incorporated as at 30 June 2016 and its financial performance and its cash flows for the period then ended in accordance with the accounting policies described in Note 1 to the financial statements, and the *Associations Incorporation Act 1987*.

Basis of Accounting

Without modifying our opinion, we draw attention to Note 1 to the financial report, which describes the basis of accounting. The financial report has been prepared to assist Westcycle Incorporated (Non-reporting) to meet the requirements of the *Associations Incorporation Act 1987*. As a result, the financial report may not be suitable for another purpose.

STANTONS INTERNATIONAL AUDIT AND CONSULTING PTY LIMITED
(An Authorised Audit Company)

Stanton International
Samir

Samir Tirodkar
Director

West Perth, Western Australia
31 October 2016

DIRECTOR'S REPORT

DIRECTORS

The names of the directors in office at the date of this report are:

- Neil Hackett
- Brad Pettitt
- Rod Annear
- Paul Lavery
- Jane Cutler
- Mike Rendell
- Hayley Lawrance
- Gary McGrath
- Kellie Lewis

PRINCIPAL ACTIVITIES

WestCycle is the state governing body for cycling in WA embracing the competitive, recreation and transport elements of cycling. It is an incorporated not for profit organisation with an independent board of directors.

WestCycle aspires to be the catalyst for cycling in WA by actively promoting cycling and by creating a framework that allows its member organisations and the broader cycling community to increase their capability to deliver cycling outcomes.

OPERATING RESULTS

The operating Surplus/(deficit) for the period amounted to \$13,218.

LIKELY FUTURE DEVELOPMENTS

The entity will continue to bring the Western Australia cycling community together as a united voice, with a joint vision of a cohesive, successful, identifiable and thriving cycling community.

DIRECTORS' BENEFITS

No remuneration is paid to any director as they are all voluntary positions.

DIRECTOR'S **REPORT** (CONTINUED)

INFORMATION ON DIRECTORS

CURRENT DIRECTORS

NEIL HACKETT	Chairman and Independent Director – Inaugural
BRAD PETTITT	Independent Director – Appointed 12 March 2012
ROD ANNEAR	Recreation Cycling – Inaugural
PAUL LAVERY	Transport Cycling – Inaugural
MIKE RENDELL	Competitive Cycling – Appointed 14 September 2012
JANE CUTLER	Independent Director – Appointed 23 November 2012
HAYLEY LAWRENCE	Independent Director – Appointed 9 December 2014
GARY McGRATH	Independent Director – Appointed 9 December 2014
KELLIE LEWIS	Independent Director – Appointed 9 December 2014



MEETINGS OF DIRECTORS

The number of meetings of directors held during the year and the number of meetings attended by each director were as follows:

NAME OF DIRECTOR	NUMBER OF MEETINGS ELIGIBLE TO ATTEND	NUMBER OF MEETINGS ATTENDED
NEIL HACKETT	10	10
BRAD PETTITT	10	7
ROD ANNEAR	10	9
PAUL LAVERY	10	8
MIKE RENDELL	10	7
JANE CUTLER	10	10
HAYLEY LAWRENCE	10	8
KELLIE LEWIS	10	10
GARY McGRATH	10	7

SIGNIFICANT CHANGES IN THE STATE OF AFFAIRS

There have been no significant changes in the state affairs of the Association during the financial year which have not been disclosed in the financial statements.

EVENTS SUBSEQUENT TO BALANCE DATE


WestCycle has received the following grants since 30 June 2016:

DEPARTMENT OF SPORT & RECREATION	\$180,000
----------------------------------	-----------

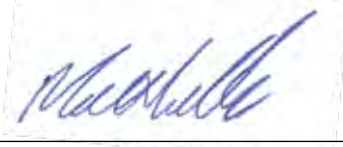
Other than the above, the directors are not aware of any circumstances that have significantly or may significantly affect the operations of the Association, the results of those operations, or the state of affairs of the Association in subsequent financial years.

Dated at Perth this 31st day of October 2016

Signed in accordance with resolution of the board of directors:



CHAIRMAN



CHIEF EXECUTIVE OFFICER

WESTCYCLE INCORPORATED

STATEMENT BY THE MEMBERS OF THE BOARD

The board of directors has determined that the Association is not a reporting entity and that this special purpose financial report should be prepared in accordance with the accounting policies outlined in Note 1 to the financial statements.

In the opinion of the board, the financial statements for the financial year ending 30 June 2016 as set out in the Statement of Financial Position, Statement of Income and Expenditure, Statement of Cash Flows, Statement of Changes in Equity and Notes to and forming Part of the Accounts –

1. Present a true and fair view of the financial position of WestCycle Incorporated as at 30 June 2016 and for the year then ended.
2. At the date of this statement there are reasonable grounds to believe that WestCycle Incorporated will be able to pay its debts as and when they become due and payable.

This statement is made in accordance with a resolution of the board and is signed for and on behalf of the board by:



CHAIRMAN



CHIEF EXECUTIVE OFFICER

Dated at Perth this 31st day of October 2016

STATEMENT OF INCOME & EXPENDITURE

FOR THE YEAR ENDED 30 JUNE 2016

		2016	2015
		\$	\$
INCOME			
UNEXPENDED GRANTS CARRIED FORWARD		93,753	110,890
GRANT INCOME	2	768,415	612,551
REVENUE FROM OPERATIONS	3	266,697	264,976
OTHER INCOME	4	79,450	46,806
TOTAL INCOME		1,208,315	1,035,223
EXPENDITURE			
GRANTS PAID	5	124,342	109,004
EXPENSES FROM OPERATIONS	5	76,659	95,776
CONTRACTOR FEES	5	55,411	110,889
ADMINISTRATION EXPENSES	5	110,097	88,045
EMPLOYEE BENEFIT EXPENSE	5	589,308	315,470
ADVERTISING	5	57,948	21,352
INSURANCE	5	6,808	4,613
OCCUPANCY COST	5	71,911	78,522
AUDIT FEES		6,000	6,000
ACCOUNTING & LEGAL FEES		12,872	19,839
DEPRECIATION		11,491	16,276
TOTAL EXPENDITURE		1,122,847	865,786
SURPLUS BEFORE TRANSFER		85,468	169,437
TRANSFER TO UNEXPENDED GRANTS	16	(72,250)	(93,753)
NET SURPLUS TO ACCUMULATED FUNDS		13,218	75,684

THE ACCOMPANYING NOTES FORM PART OF THE FINANCIAL STATEMENTS

STATEMENT OF ASSETS AND LIABILITIES

FOR THE YEAR ENDED 30 JUNE 2016

		2016 \$	2015 \$
CURRENT ASSETS			
CASH AND CASH EQUIVALENTS	6	347,589	339,725
OTHER RECEIVABLES	8	28,931	752
TOTAL CURRENT ASSETS		376,520	340,477
NON-CURRENT ASSETS			
PROPERTY PLANT AND EQUIPMENT	7	36,560	48,051
OTHER RECEIVABLES	8	5,500	5,127
TOTAL NON-CURRENT ASSETS		42,060	53,178
TOTAL ASSET		418,580	393,655
CURRENT LIABILITY			
TRADE & OTHER PAYABLES	9	69,478	49,996
PROVISIONS	10	21,737	8,292
UNEXPIRED GRANTS/RECEIPTS	11	72,250	93,753
TOTAL CURRENT LIABILITIES		163,465	152,041
NON-CURRENT LIABILITIES			
TRADE AND OTHER PAYABLES	9	3,117	2,834
TOTAL NON-CURRENT LIABILITIES		3,117	2,834
TOTAL LIABILITIES		166,582	154,875
NET ASSETS		251,998	238,780
ACCUMULATED FUNDS			
OPENING BALANCE AT 1 JULY		238,780	163,096
CURRENT PERIOD SURPLUS		13,218	75,684
BALANCE ACCUMULATED FUNDS		251,998	238,780

THE ACCOMPANYING NOTES FORM PART OF THE FINANCIAL STATEMENTS

STATEMENT OF CHANGES IN EQUITY FOR THE YEAR ENDED 30 JUNE 2016

	2016 \$	2015 \$
ACCUMULATED FUNDS BALANCE AT THE COMMENCEMENT OF THE YEAR	238,780	163,096
GROSS SURPLUS (DEFICIT) FROM OPERATIONS	85,468	169,437
TRANSFER OUT TO UNEXPENDED GRANTS	(72,250)	(93,753)
ACCUMULATED FUNDS BALANCE AT 30 JUNE 2016	251,998	238,780

THE ACCOMPANYING NOTES FORM PART OF THE FINANCIAL STATEMENTS

STATEMENT OF CASH FLOWS

CASH FLOWS FROM ACTIVITIES DURING PERIOD	2016	2015
	\$	\$
GRANTS RECEIVED	768,415	612,551
GRANTS PAID	(124,342)	(109,004)
PAYMENTS TO SUPPLIERS, CONSULTANTS AND EMPLOYEES	(954,177)	(861,298)
INTEREST RECEIVED	6,973	8,042
OTHER INCOME RECEIVED	310,995	338,977
NET CASH OUTFLOW FROM ACTIVITIES DURING PERIOD	12 7,864	(10,732)
CASH FLOWS FROM INVESTING ACTIVITIES		
DEPOSITS PAID	-	-
ACQUISITION OF PLANT AND EQUIPMENT	-	(1,790)
NET CASH OUTFLOW FROM INVESTING ACTIVITIES	-	(1,790)
CASH FLOWS FROM FINANCING ACTIVITIES		
DEPOSIT RECEIVED	-	-
NET CASH FLOWS FROM FINANCING ACTIVITIES	-	-
NET DECREASE IN CASH HELD	7,864	(12,522)
CASH AT THE BEGINNING OF FINANCIAL PERIOD	339,725	352,247
CASH AT THE END OF THE FINANCIAL PERIOD	6 347,589	339,725

THE ACCOMPANYING NOTES FORM PART OF THE FINANCIAL STATEMENTS

NOTES TO AND FORMING PART OF THE FINANCIAL STATEMENTS FOR THE PERIOD 1 JULY 2015 TO 30 JUNE 2016

NOTE 1: STATEMENT OF SIGNIFICANT ACCOUNTING POLICIES

The principal accounting policies adopted in the preparation of the financial report are set out below.

SIGNIFICANT ACCOUNTING POLICIES AND BASIS OF PREPARATION

The Directors have determined that the financial report presented is a special purpose financial report prepared to satisfy the financial reporting requirements of the Associations Incorporation Act 1987 (Western Australia) and as required by its Constitution. The Board has determined that WestCycle Incorporated is not a reporting entity. The following material accounting policies adopted on the incorporation of the entity, unless otherwise stated, have been consistently applied in the preparation of this financial report.

The financial report has been prepared in accordance with the requirements of the Associations Incorporation Act 1987 (Western Australia) and applicable Australian Accounting Standards.

The financial report has been prepared on an accruals basis and is based on historic costs and does not take into account changing money values or, except where specifically stated, the current valuation of non-current assets.

GRANTS AND OTHER CONTRIBUTIONS REVENUE

Grants, donations, gifts and other non-reciprocal contributions are recognised as revenue when WestCycle obtains control over the assets comprising the contributions. Control is normally obtained upon their receipt.

If conditions are attached to the grant that must be satisfied before Westcycle is eligible to receive the contribution, recognition of the grant as revenue will be deferred until those conditions are satisfied.

As at 30 June each year, funds received by WestCycle which have not been expended are recognised as a current liability. These funds are then transferred and recognised in the Statement of Income and Expenditure for the following year. Contributions are recognised at their fair value. Contributions of services are only recognised when a fair value can be reliably determined and the services would be purchased if not donated.

GRANTS AND OTHER CONTRIBUTIONS PAID

Grants, donations, gifts and other non-reciprocal distributions are fully expensed during the financial year in which the payment was made, irrespective of whether the receiving party has met the conditions set out in the agreement or not. If conditions are not satisfied, grant distributions can be recovered from receiving parties or grant distributions adjusted in future years.

THE ACCOMPANYING NOTES FORM PART OF THE FINANCIAL STATEMENTS

NOTES TO AND FORMING PART OF THE FINANCIAL STATEMENTS FOR THE PERIOD 1 JULY 2015 TO 30 JUNE 2016

NOTE 1: STATEMENT OF SIGNIFICANT ACCOUNTING POLICIES CONT...

ACQUISITIONS OF ASSETS

The cost method of accounting is used for all acquisitions of assets. Cost is measured as the fair value of the assets given up or liabilities undertaken at the date of acquisition plus incidental costs directly attributable to the acquisition.

Assets costing less than \$500 may be expensed in the year of acquisition (other than where they form part of a group of similar items which are significant in total).

All non-current assets having a limited useful life are systematically depreciated over their estimated useful lives in a manner which reflects the consumption of their future economic benefits.

Property, plant and equipment are carried at cost less accumulated depreciation and impairment losses.

Depreciation is calculated on a diminishing value basis to apportion the net cost of each item of property, plant and equipment over its expected useful life to the Association. Estimates of remaining useful lives are made on an annual basis for all assets. Depreciation is expensed as a operating expenditure in the year in which it is incurred. The depreciation rates used for each class of asset are as follows:

COMPUTER EQUIPMENT	40.00%
FURNITURE AND FIXTURES	12.50%
ALL OTHER PLANT AND EQUIPMENT	20.00%

LEASES

The only leases currently operated through WestCycle are leases for the purpose of the use of office space.

CASH

For the purpose of the Statement of Cash Flows, cash includes cash assets and restricted cash assets net of outstanding bank overdrafts, if any. These include short-term deposits that are readily convertible to cash on hand and are subject to insignificant risk of changes in value.

INVESTMENTS

Investments are brought to account at the lower of cost and recoverable amount. Interest revenues have been recognised as they were received.

THE ACCOMPANYING NOTES FORM PART OF THE FINANCIAL STATEMENTS

NOTES TO AND FORMING PART OF THE FINANCIAL STATEMENTS **FOR THE PERIOD 1 JULY 2015 TO 30 JUNE 2016**

NOTE 1: STATEMENT OF SIGNIFICANT ACCOUNTING POLICIES CONT...

WEBSITE COSTS

Costs in relation to web sites controlled by WestCycle have been charged as expenses in the period in which they are incurred.

PAYABLES

Payables, including accruals not yet billed, are recognised when WestCycle become obliged to make future payments as a result of a purchase of assets or provision of services, or where there is a commitment for future services.

EMPLOYEE ENTITLEMENTS

Provision is made for the Association's liability for employee entitlements arising from services rendered by employees to the reporting date. Employee entitlements for wages and salaries, annual leave and long service leave have been measured as follows;

(i) Annual leave

This benefit is recognised at the reporting date in respect to employees' services up to that date and is measured at the current remuneration rate, applicable to each employee.

(ii) Long service leave

Leave benefits are calculated at current remuneration rates and based on the accrued liability to the reporting date. A liability for long service leave has been recognised from the commencement date of each employee based on the need to recognise the contribution to this future expense, from funding received. An actuarial assessment of long service leave has not been undertaken. It is considered that this treatment of the liability for long service leave provides a conservative provision where future funding levels are uncertain.

(iii) Superannuation

WestCycle contributes to superannuation funds of the employee's choice in compliance with the Commonwealth Government's Superannuation Guarantee (Administration) Act 1992. All these funds comply with the legislation applying to administration of superannuation and retirement benefit arrangements, specifically with regard to the preservation of employer contributions and the portability of funds to alternate providers.

ROUNDING OF AMOUNTS

Amounts in the financial statements have been rounded to the nearest dollar.

THE ACCOMPANYING NOTES FORM PART OF THE FINANCIAL STATEMENTS

NOTES TO AND FORMING PART OF THE FINANCIAL STATEMENTS FOR THE PERIOD 1 JULY 2015 TO 30 JUNE 2016

NOTE 1: STATEMENT OF SIGNIFICANT ACCOUNTING POLICIES CONT...

TAXATION AND GOODS AND SERVICES TAX

The Association promotes cycling in the state of Western Australia and is classed as exempt from Income Tax by virtue of Division 50 of the Income Tax Assessment Act 1997.

The net amount of goods and services tax recoverable from or payable to the Australian Taxation Office is included as a current asset or liability in the balance sheet. Revenue, expenses and assets are recognised net of the GST. Trade receivables and payables are stated with the amount of GST included.

RECEIVABLES

The recoverability of receivables is assessed at balance date and debts that are known to be uncollectible are written off.

THE ACCOMPANYING NOTES FORM PART OF THE FINANCIAL STATEMENTS

NOTES TO AND FORMING PART OF THE FINANCIAL STATEMENTS **FOR THE PERIOD 1 JULY 2015 TO 30 JUNE 2016**

PAYABLES

These amounts represent liabilities for goods and services provided to the Association prior to the end of the financial period which are unpaid. Trade payables are normally settled within 30 days.

	2016	2015
	\$	\$
NOTE 2 GRANT INCOME		
GRANT FROM DEPARTMENT OF SPORTS & RECREATION (EXCLUDE DEFERRED GRANT INCOME)	656,000	490,360
GRANT FROM DEPARTMENT OF TRANSPORT	73,415	70,918
GRANT FROM LOTTERYWEST	33,500	51,273
GRANT FROM DEPARTMENT OF PARKS AND WILDLIFE	5,500	-
	768,415	612,551
NOTE 3 REVENUE FROM OPERATIONS		
MEMBERSHIP FEES	127,437	97,791
PARTICIPANT FEES	110,817	159,276
OTHER	28,443	7,909
	266,697	264,976
NOTE 4 OTHER INCOME		
INTEREST INCOME	6,973	8,042
OTHER INCOME	72,477	38,764
	79,450	46,806

THE ACCOMPANYING NOTES FORM PART OF THE FINANCIAL STATEMENTS

NOTES TO AND FORMING PART OF THE FINANCIAL STATEMENTS **FOR THE PERIOD 1 JULY 2015 TO 30 JUNE 2016**

		2016	2015
		\$	\$
NOTE 5	EXPENSES FROM CONTINUING OPERATIONS		
	GRANTS PAID	124,342	109,004
		124,342	109,004
	EXPENSES FROM OPERATIONS		
	INSTRUCTOR FEES	28,368	39,892
	EVENT ENTRY FEES	18,638	34,886
	OTHER FEES	29,653	20,998
		76,659	95,776
	CONTRACTOR FEES		
	CONTRACTOR FEES	55,411	110,889
		55,411	110,889
	ADMINISTRATION EXPENSES		
	TRAVEL AND ACCOMMODATION	31,770	24,779
	SOFTWARE AND SUPPORT	19,915	3,772
	OTHER ADMINISTRATIVE EXPENSES	58,412	59,494
		110,097	88,045
	EMPLOYEE BENEFITS EXPENSES		
	WAGES AND SALARIES	522,826	298,068
	LEAVE ENTITLEMENTS	17,055	(11,489)
	OTHER PAYROLL EXPENSES	49,427	28,891
		589,308	315,470

THE ACCOMPANYING NOTES FORM PART OF THE FINANCIAL STATEMENTS

NOTES TO AND FORMING PART OF THE FINANCIAL STATEMENTS FOR THE PERIOD 1 JULY 2015 TO 30 JUNE 2016

		2016 \$	2015 \$
NOTE 5	EXPENSES FROM CONTINUING OPERATIONS		
	ADVERTISING		
	PUBLICATIONS	40,180	13,862
	OTHER	17,768	7,490
		57,948	21,352
	INSURANCE		
	WORKCOVER INSURANCE	6,808	1,773
	OTHER INSURANCE	0	2,840
		6,808	4,613
	OCCUPANCY COST		
	OFFICE RENTAL	71,328	72,857
	OTHER OCCUPANCY COST	583	5,665
		71,911	78,522
NOTE 6	CASH & CASH EQUIVALENTS		
	CASH AT BANK	347,589	335,541
	CASH ON HAND	0	4,184
		347,589	339,725
NOTE 7	PROPERTY PLANT AND EQUIPMENT		
	PLANT AND EQUIPMENT AT COST	88,815	88,815
	LESS: ACCUMULATED DEPRECIATION	(52,255)	(40,764)
		36,560	48,051
NOTE 8	RECEIVABLES		
	CURRENT RECEIVABLES		
	TRADE RECEIVABLES	28,931	752
		28,931	752
	NON-CURRENT RECEIVABLES		
	SECURITY DEPOSIT	5,500	5,127
		5,500	5,127

THE ACCOMPANYING NOTES FORM PART OF THE FINANCIAL STATEMENTS

NOTES TO AND FORMING PART OF THE FINANCIAL STATEMENTS **FOR THE PERIOD 1 JULY 2015 TO 30 JUNE 2016**

		2016	2015
		\$	\$
NOTE 9	TRADE AND OTHER PAYABLES		
	CURRENT PAYABLES		
	TRADE AND OTHER PAYABLES	52,507	34,275
	TAX LIABILITIES	10,731	9,721
	ACCRUALS	6,240	6,000
		69,478	49,996
	NON-CURRENT PAYABLES		
	DEPOSIT HELD	3,117	2,834
NOTE 10	PROVISIONS		
	PROVISION FOR LEAVE ENTITLEMENTS	21,737	8,292
		21,737	8,292
NOTE 11	UNEXPIRED GRANTS/RECEIPTS		
	UNEXPENDED GRANT DURING PERIOD	72,250	93,753
		72,250	93,753

THE ACCOMPANYING NOTES FORM PART OF THE FINANCIAL STATEMENTS

NOTES TO AND FORMING PART OF THE FINANCIAL STATEMENTS **FOR THE PERIOD 1 JULY 2015 TO 30 JUNE 2016**

		2016	2015
		\$	\$
NOTE 12	RECONCILIATION ON CASH FLOW FROM OPERATING ACTIVITIES		
	NET INCOME	13,218	75,684
	ADJUSTMENT FOR NON-CASH ITEMS		
	DEPRECIATION	11,491	16,276
	CHANGE IN OPERATING ASSETS AND LIABILITIES		
	DECREASE IN UNSPENT GRANT	(21,503)	(17,137)
	INCREASE/(DECREASE) IN TRADE AND OTHER RECEIVABLES	(28,552)	(32,051)
	INCREASE/(DECREASE) IN TRADE AND OTHER PAYABLES	19,765	(109,888)
	INCREASE/(DECREASE) IN PROVISIONS	13,445	(10,904)
	NET CASH OUTFLOW FROM OPERATING ACTIVITIES	7,864	(10,732)
NOTE 13	AUDITOR'S REMUNERATION		
	REMUNERATION OF THE AUDITOR OF THE COMPANY FOR		
	- AUDITING OR REVIEW THE FINANCIAL REPORT	6,000	6,000
		6,000	6,000
NOTE 14	COMMITMENTS AND CONTINGENCIES		
	Other than those stated elsewhere in this financial report, there were no commitments or contingencies at 30 June 2016.		

THE ACCOMPANYING NOTES FORM PART OF THE FINANCIAL STATEMENTS

NOTES TO AND FORMING PART OF THE FINANCIAL STATEMENTS **FOR THE PERIOD 1 JULY 2015 TO 30 JUNE 2016**

NOTE 15 SUBSEQUENT EVENTS

WestCycle has received the following grants since 30 June 2016:

DEPARTMENT OF SPORT & RECREATION	\$180,000
----------------------------------	-----------

Other than the above, the directors are not aware of any circumstances that have significantly or may significantly affect the operations of the Association, the results of those operations, or the state of affairs of the Association in subsequent financial years.

NOTE 16 GRANTS UTILISATION

RECEIPTS

UNEXPENDED GRANTS CARRIED FORWARD

GRANTS RECEIVED DURING THE FINANCIAL YEAR

DISBURSEMENTS OF GRANTS

EXPENSES THROUGH STATEMENT OF INCOME AND EXPENDITURE

PURCHASE OF EQUIPMENT

GRANTS DEFERRED TO THE NEXT FINANCIAL YEAR

2016	2015
\$	\$
93,753	110,890
768,415	612,551
(789,918)	(627,898)
-	(1,790)
72,250	93,753

THE ACCOMPANYING NOTES FORM PART OF THE FINANCIAL STATEMENTS

END OF FINANCIAL REPORT.



Street Address:

105 Cambridge Street
West Leederville
WA 6007

Telephone: 08 6336 9688

Email: info@westcycle.org.au

Web: westcycle.org.au

ABN: 36 563 134 343



Department of
Sport and Recreation